

How to use AOU-STUDENTS-WIFI on your laptop?

If you are a current Arab Open University student, you may connect your laptop to our student's wireless network by following the instructions below.

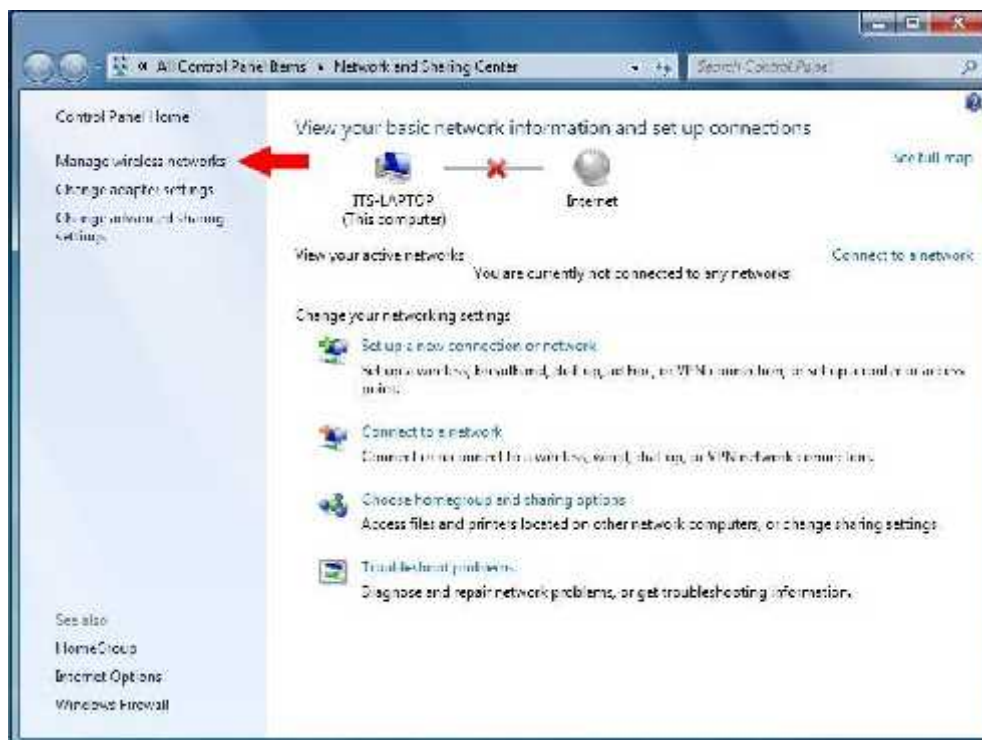
❖ STEP 1

- Select the **Network icon** in the system tray.
- Select Open **Network and Sharing Center**.



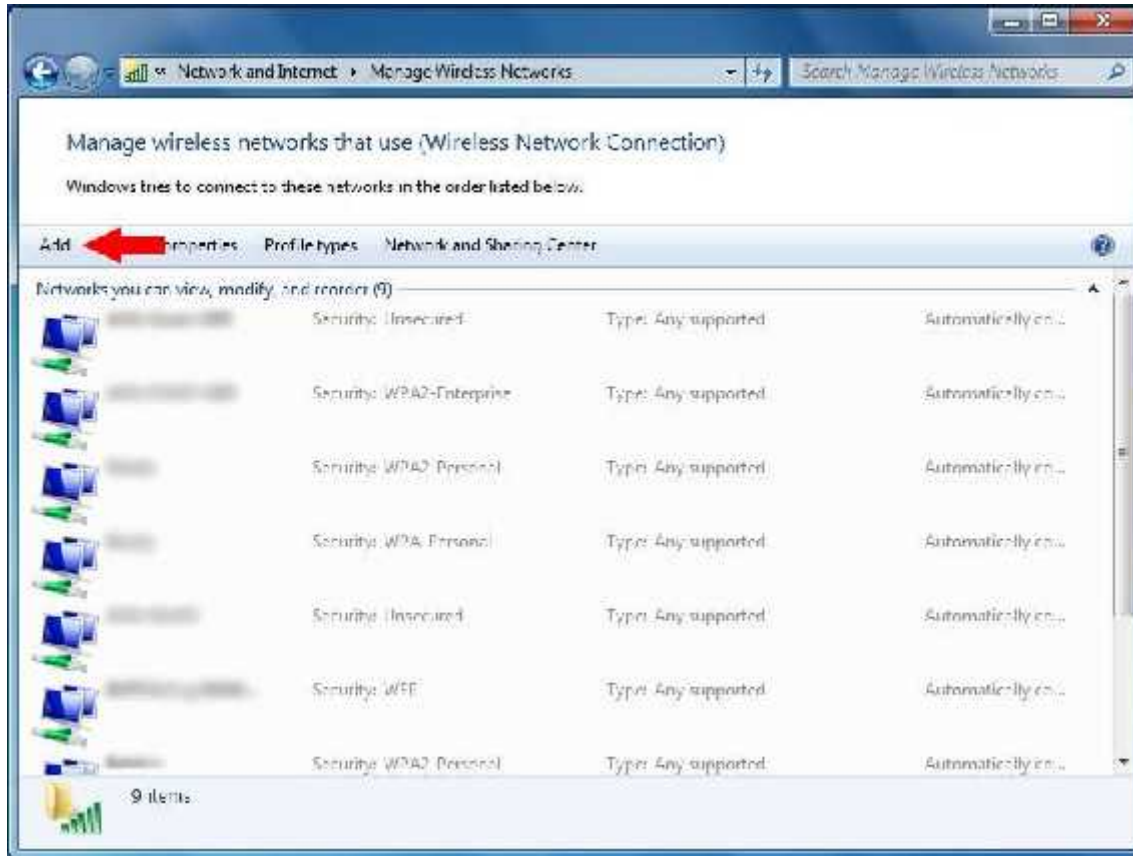
❖ STEP 2

- Select **Manage Wireless Networks** in the upper left area.



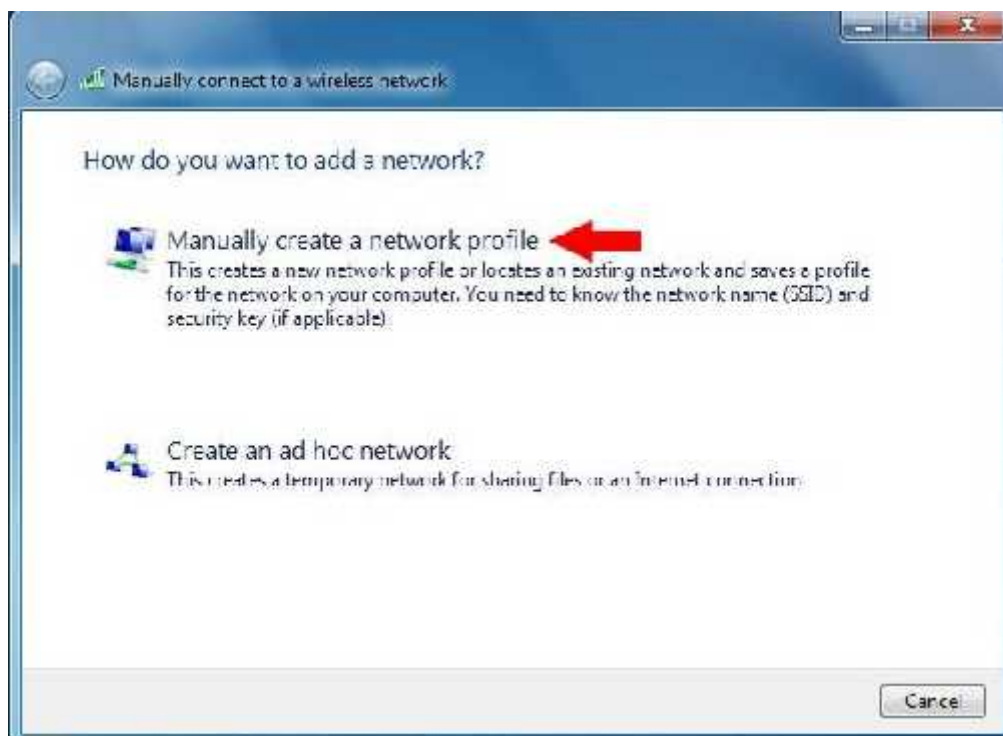
❖ **STEP 3**

- Select the **Add** button.



❖ **STEP 4**

- Select **Manually create a network profile**.



❖ **STEP 5**

- Enter the following values:

Network Name: AOU-STUDENTS-WIFI

Security Type: WPA2-Enterprise

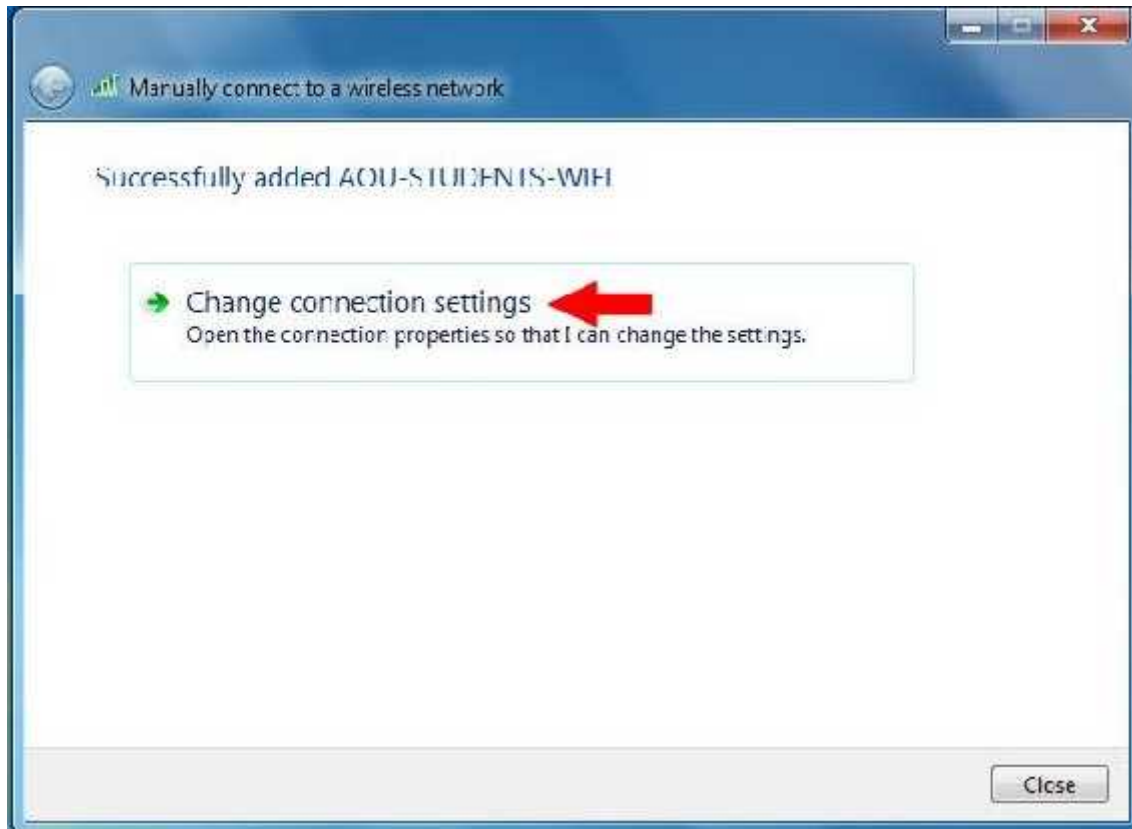
Encryption Type: AES

- Select the **Next** button.



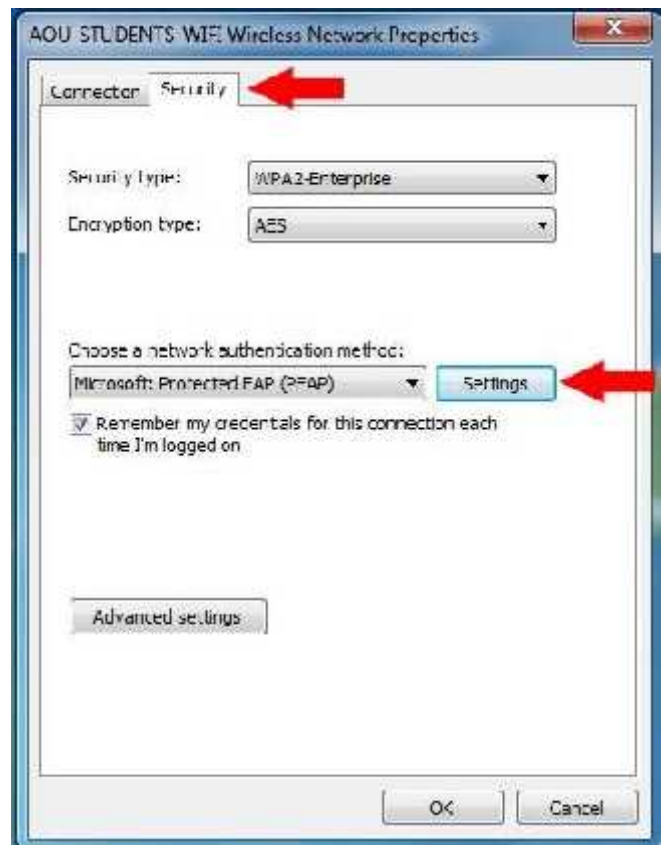
❖ **STEP 6**

- Select **Change connection settings**.



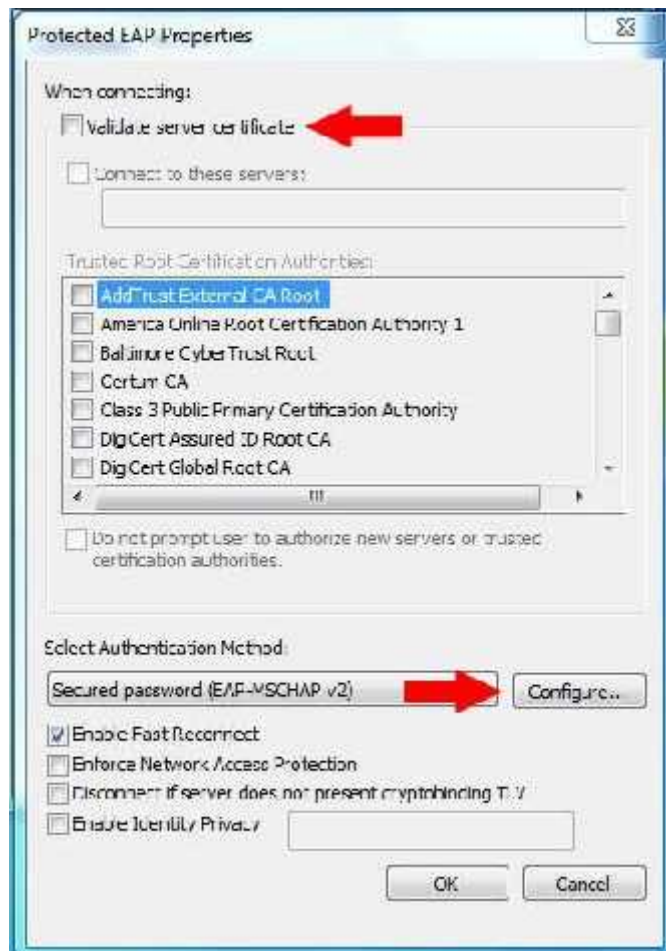
❖ **STEP 7**

- Select the **Security** tab. Change Encryption Type to **AES**.
- Select the **Settings** button.



❖ **STEP 8**

- Uncheck **Validate server certificate**.
- Make sure Authentication Method is set to **Secured password (EAP-MSCHAP v2)**.
- Select the **Configure** button.



❖ **STEP 9**

- Uncheck **Automatically use my Windows logon name and password.**
- Select the **OK** button twice.



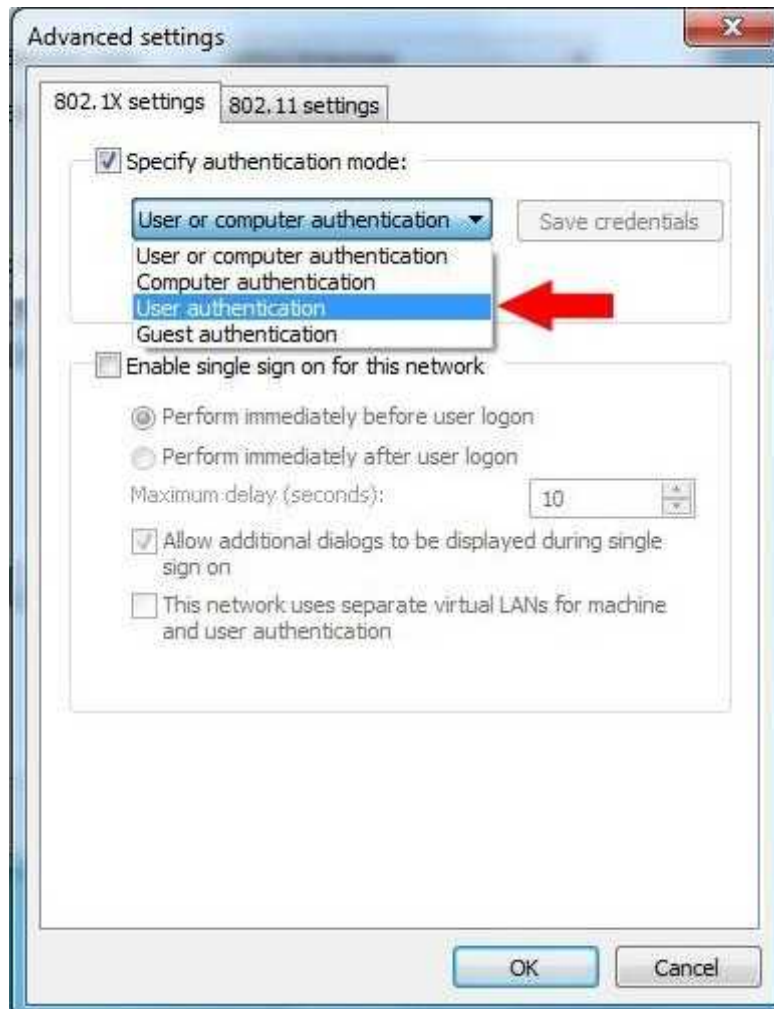
❖ **STEP 10**

- Select **Advanced settings.**



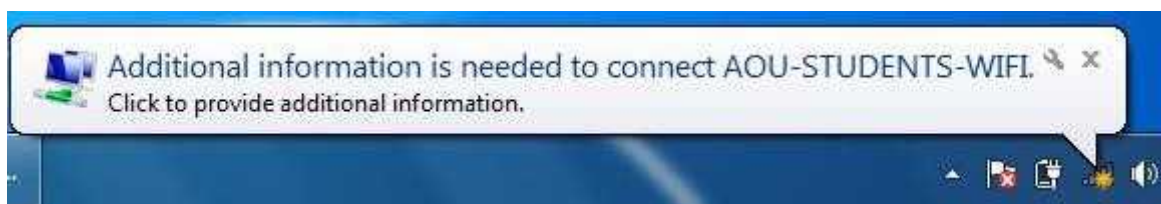
❖ **STEP 11**

- Select the **802.1X settings** tab.
- Select **User authentication** from the drop down menu.
- Select **OK** for the remaining two panels.
- Select the Close button for the manual wireless network window.
- Finally, close the Manage Wireless Networks window.



❖ **STEP 12**

- You should receive a notification near the system tray that additional information is required to connect to the network. **Select this notification.**



❖ **STEP 13**

- Enter your **AOU username and password** in the required fields.
- Select the **OK** button to complete the authentication process.
- You would be connected to the wireless network within 10-15 seconds.



) After Connecting WiFi in Laptop / Mobile, Install the Certificate by Click on <http://cert.aou.org.bh> and then follow the steps. In order to use the Internet efficiently.

For any technical support
Please contact IT Services Department
“support@aou.org.bh”