

Emergency Evacuation Plan

Operational, Maintenance & Facilities Department
AOU Bahrain



For your safety, please follow the steps below in case of fire:

1. If you notice a fire or smoke, alert others by activating the building fire alarm by breaking the glass of any

call point



located in the corridors and call extension numbers **123** or **555** (from 8 AM to 8 PM)

or extension no. **157** (24 hours) from a safe location.

2. Confine the fire by closing the doors. (University internal doors are fire rated doors).

3. Evacuate immediately. Go to the nearest exit or stairway by following the emergency exit signs.

4. NEVER use an elevator during a fire emergency. (University elevators are designed to automatically stop at the ground floor in case of fire alarm is activated).



5. Assemble at the Fire Assembly Point located at carpark exit gate.
6. Remain outside the building until the competent authority or emergency personnel announces that it is safe to re-enter the building.

Important Safety Tips During A Fire:

- During a fire, Crawl on the floor.



Heat and smoke rises, so if you stand up during a fire, you could be exposed to 300° Smoke.

- Before opening any door, feel the door first. If it is hot, don't open the door. If it isn't hot, open it slightly, and if heat or heavy smoke is present, close the door and leave by an alternate exit.

FIRE EXTINGUISHERS AND THEIR USES

AOU Bahrain has the following types of fire extinguishers:



WATER EXTINGUISHER

**USED TO FIGHT
CLASS (A) FIRE**

**DANGER DO NOT USE ON LIVE
ELECTRICAL EQUIPMENT**

*Used to fight the following
types of fire :*

- ❖ PAPER
- ❖ WOOD
- ❖ CLOTH
- ❖ RUBBER
- ❖ MANY PLASTIC



FOAM EXTINGUISHER

**USED TO FIGHT
CLASS (B) FIRE**

**DANGER DO NOT USE ON LIVE
ELECTRICAL EQUIPMENT**

*Used to fight the following
types of fire :*

- ❖ OIL
- ❖ OIL — BASED PAINT



FIRE EXTINGUISHERS AND THEIR USES



DRY POWDER EXTINGUISHER

**USED TO FIGHT CLASS
(A) + (B) + (C) + (D) FIRE**

DANGER SHOULD NOT BE EXPOSED TO DIRECT SUN LIGHT AND IT SHOULD NOT BE USED IN SMALL AND CLOSED AREAS TO AVOID SUFFOCATION

Used to fight the following types of fire :

- ❖ BURNING METELS (SPECIAL KIND OF POWDER)
- ❖ LIQUERABLE SOLIDS
- ❖ FLAMMABLE GASES
- ❖ ENERGIZED ELECTRICAL EQUIPMENT



CARBON DIOXIDE (CO2) EXTINGUISHER

**USED TO FIGHT CLASS
(A) + (B) + (C) FIRE**

DANGER THE FIRE EXTINGUISHER SHOULD NOT BE EXPOSED TO DIRECT SUN LIGHT AND IT SHOULD NOT BE USED IN SMALL AND CLOSED AREAS TO AVOID SUFFOCATION

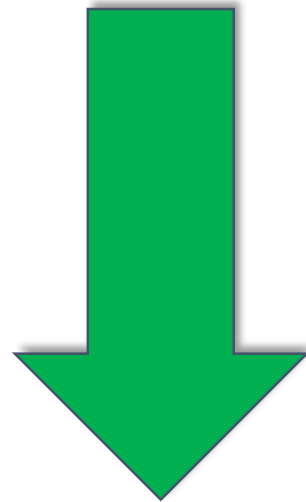
Used to fight the following types of fire :

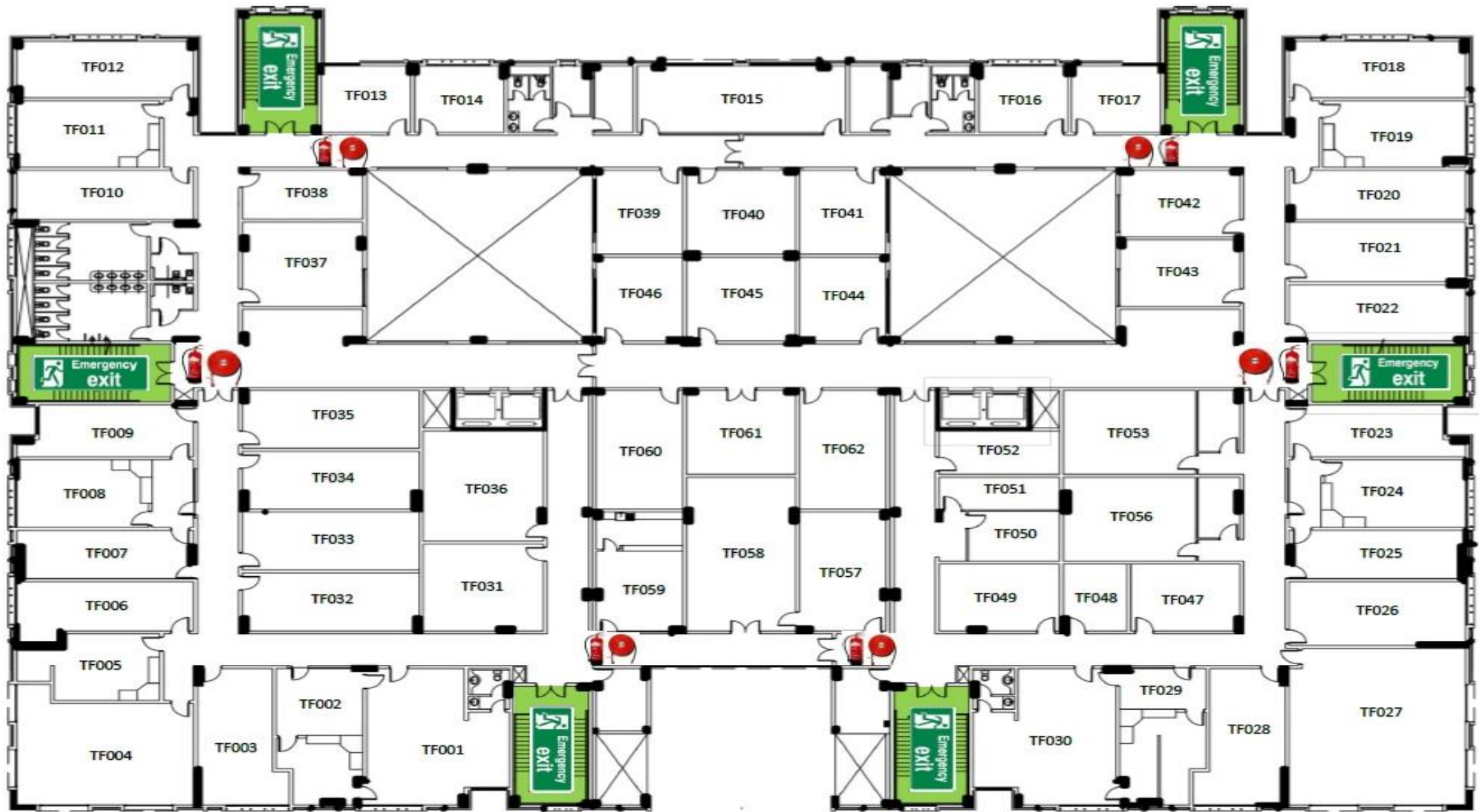
- ❖ ENERGIZED ELECTRICAL EQUIPMENT
- ❖ FLAMMABLE GASES
- ❖ ORDINARY COMBUSTIBLE MATERIALS






AOU Building Emergency Floor Plans

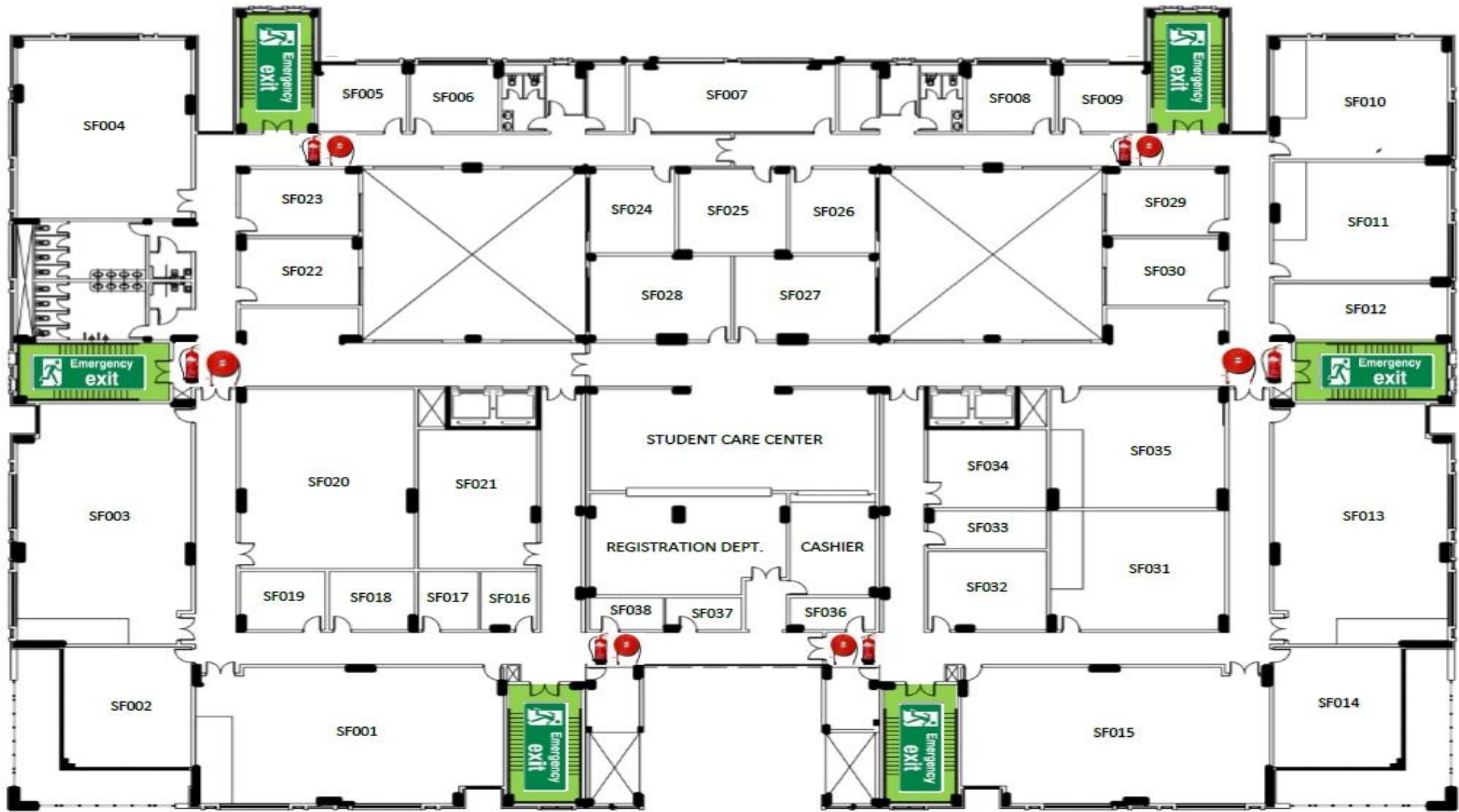
Please review the floor plans below showing the locations of emergency exits, fire extinguishers and fire hose reels located at each floor.



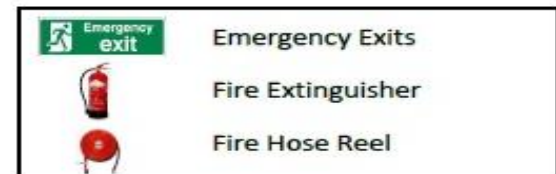


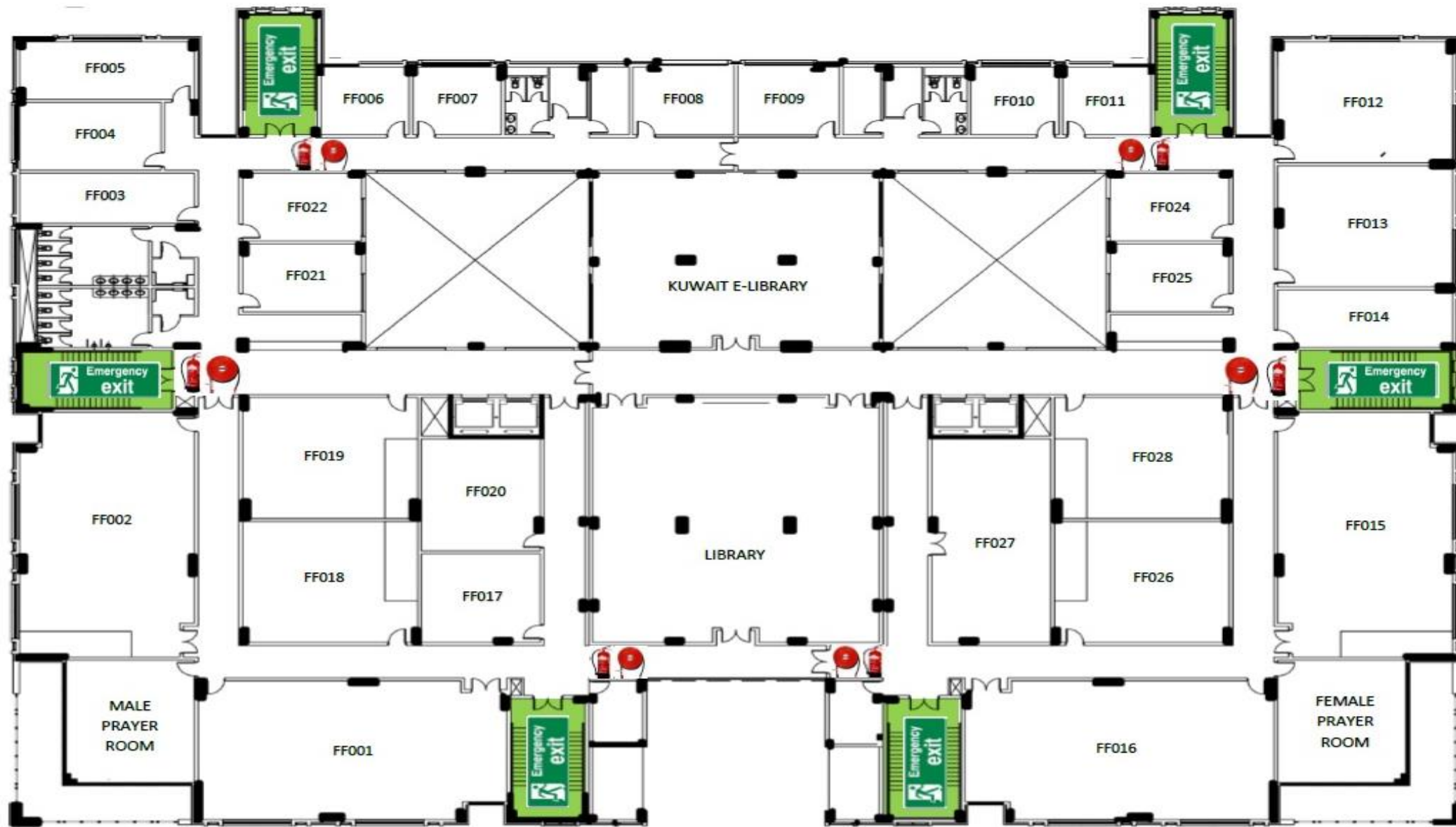
THIRD FLOOR

	Emergency Exits
	Fire Extinguisher
	Fire Hose Reel

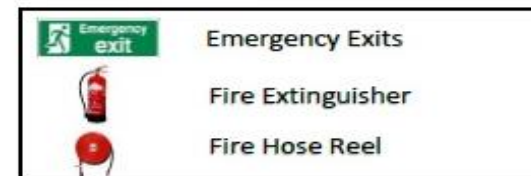


SECOND FLOOR



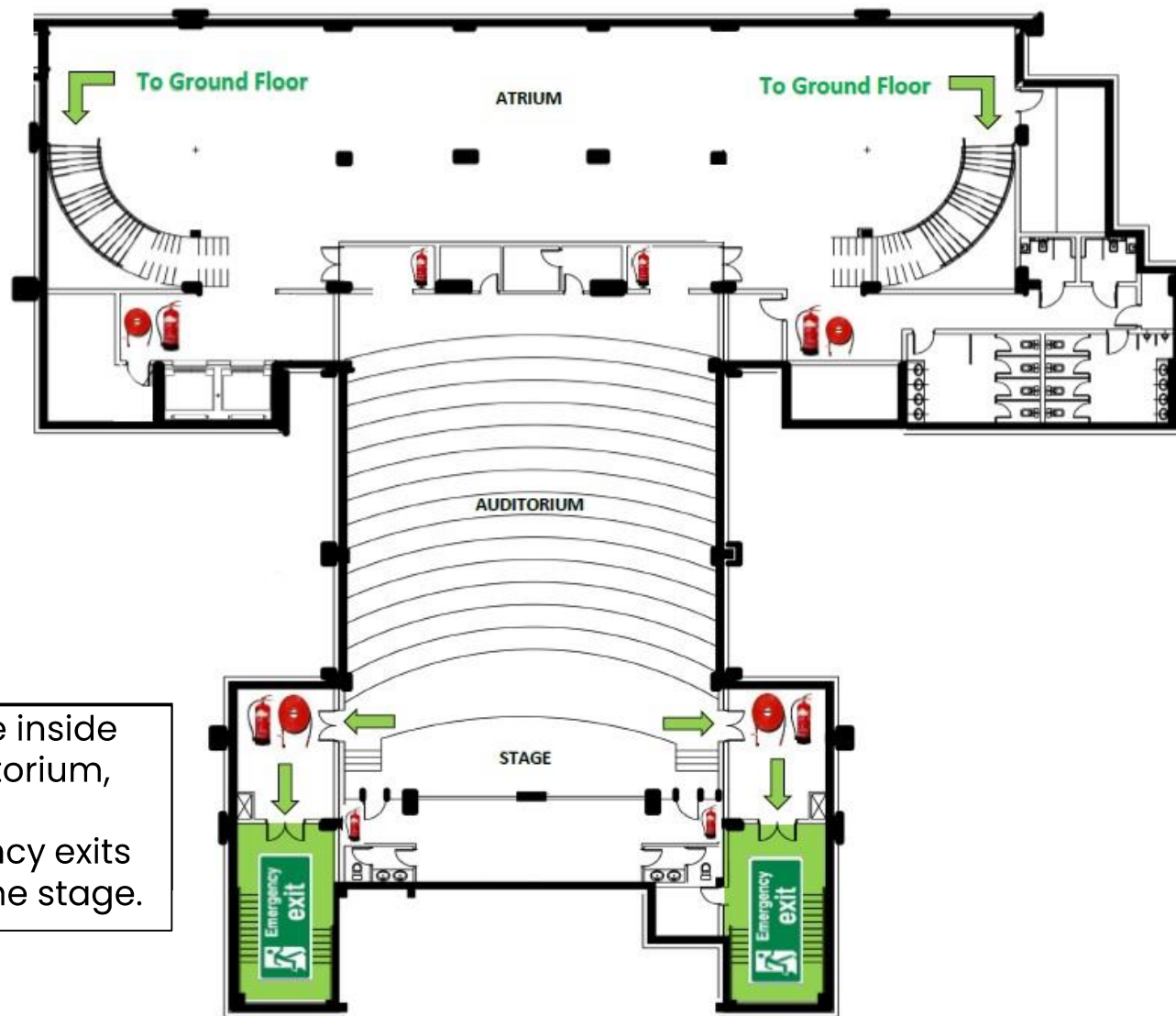


FIRST FLOOR

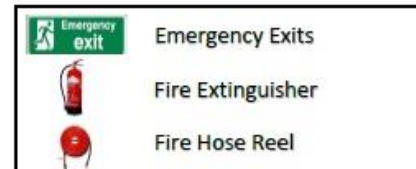


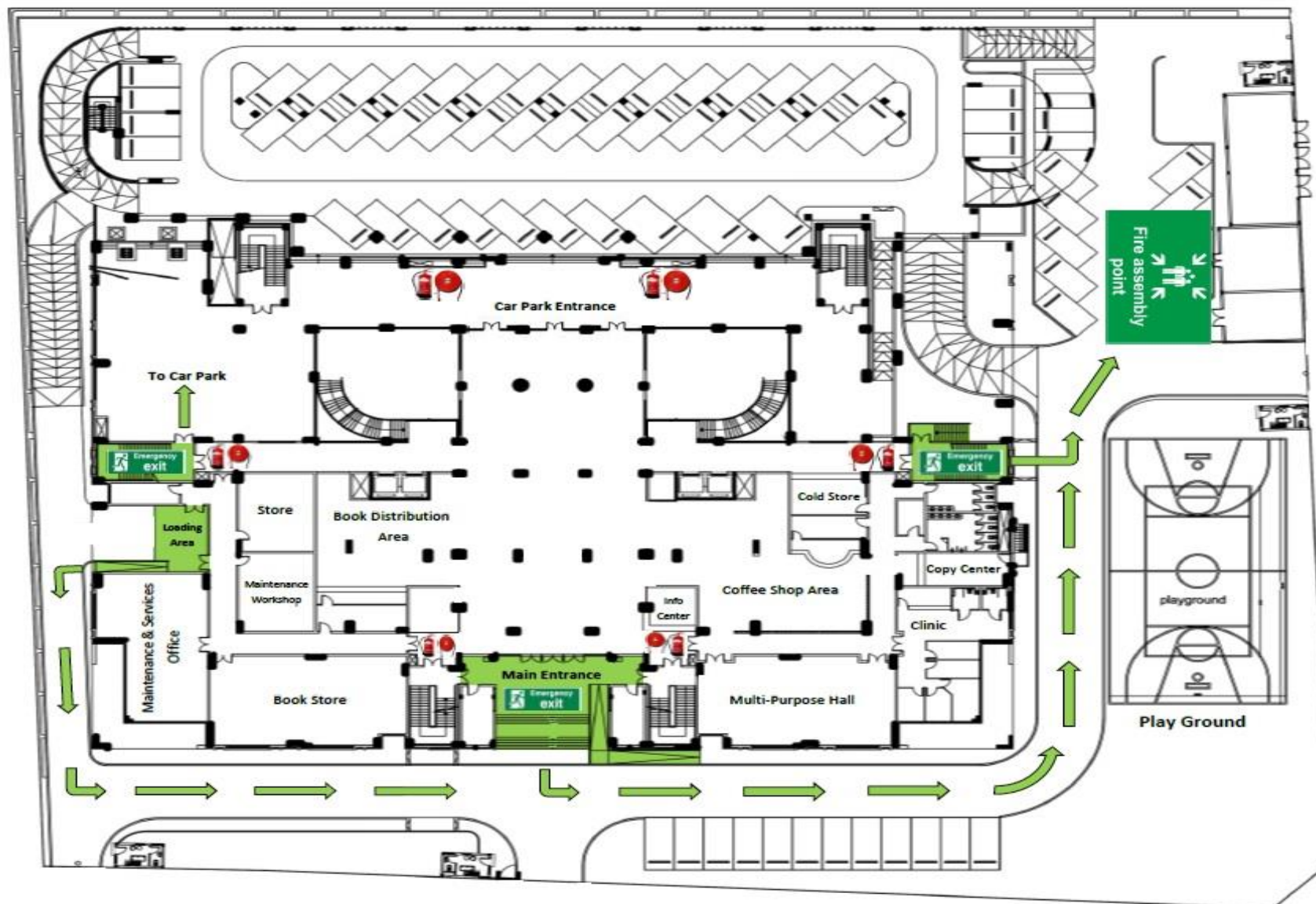
If you are in the Atrium area, use the curved stairs to go to Ground Floor.

If you are inside the Auditorium, use the emergency exits beside the stage.





BASEMENT FLOOR





Ground FLOOR

	Fire Assembly Point
	Emergency Exit
	Fire Extinguisher
	Fire Hose Reel



AOU

الجامعة العربية المفتوحة
Arab Open University

WE WISH YOU ALL A SAFE WORKPLACE

Operational, Maintenance & Facilities Department
AOU Bahrain